

ERA

11

04H

PRNT

S01

G1

ERA Micro Hydraulic Pack



The ERA Electro-hydraulic reversible power pack is directly mounted to a hydraulic actuator. Using one of the mounting plates a compact and reliable actuator can be easily manufactured without the use of hydraulic hose connections.

With 150W to 800W DC Motors and 150W AC Motors the gear pump can produce pressures up to 200bar.

A fully functional actuator can be produced with thermal relief valve protection and a built-in manual override valve. Dual Pilot Check Valves give leak free control to "lock" actuator position.

ERA actuator applications are:

- Wheelchair Lifts
- Solar Trackers
- Disability lifts
- Valve actuators

Hydraproducts have a proven record of performance.

- 100% testing
- Wide application knowledge
- Fast deliveries
- Product support
- 3D Solid Modelling facilities

ERA Micro hydraulik aggregate



Das reversierbare elektrohydraulische ERA Aggregat ist direkt auf einem Hydraulikantrieb montiert. Mittels einer der Motageplatten kann leicht ein kompakter und zuverlässiger Atrieb hergestellt werden, ohne dass hydraulische Ventil veridungen notwendig sind. Mit Gleichstrommotoren von 150 W bis 800 W und 150 W Wechselstrommotoren kann die Zahnradpumpe Druck von bis zu 160 bar erzeugen.

Ein voll funktionsfähiger Antrieb kann mit thermischem Sicherheitsventil und einem eingebauten manuellen Override Ventil hergestellt werden. Doppelte Rückschlagventile bieten leckfreie Steuerung, um die Antriebsposition zu fixieren.

Anwendungsbereiche:

- Rollstuhlauzüge
- Solartracker
- Invalidenlifte
- Ventilantriebe

Hydraproducts haben eine nachgewiesene reputation.

- Erfahrung in vielen Anwendungen bereiche
- Kurze Lieferzeiten
- Großes Teilelager
- Kundenservice
- Kundenspezifische Produkte
- 3D Produkt design

ERA Grupos Motobombas



El power pack electrohidráulico ERA reversible está directamente montado a un accionador hidráulico. Mediante la utilización de placas de montaje, se puede fabricar fácilmente un accionador compacto y confiable sin emplear conexiones de mangueras hidráulicas.

Con motores de 150W a 800W DC y motores de 150W AC la bomba de engranajes puede producir hasta 160 bar.

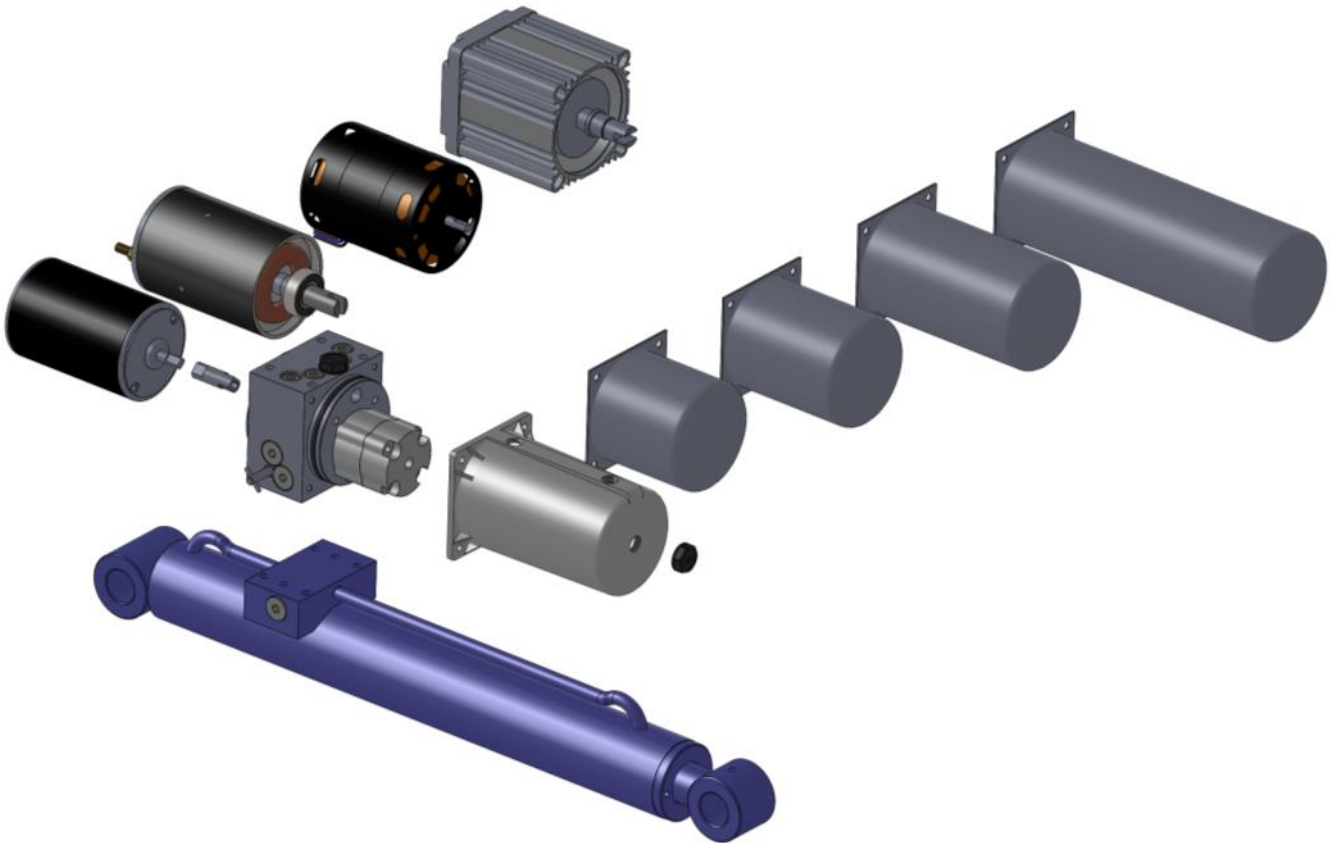
Se puede producir un accionador completamente funcional con una protección de la válvula de liberación térmica y una protección de la válvula de accionador manual incorporada. Las válvulas duales de control de piloto brindan un control de liberación de fugas para "bloquear" la posición del accionador.

Las aplicaciones del accionador ERA son:

- Elevación de sillas de ruedas
- Seguidores solares
- Elevadores para discapacidades
- Accionadores de válvulas

Hydraproducts tienen una reputación de funcionamiento comprobada.

- 100% comprobado
- Conocimiento de aplicación amplio
- Entregas inmediatas
- Soporte del producto
- Instalaciones de modelado en 3D



ERA

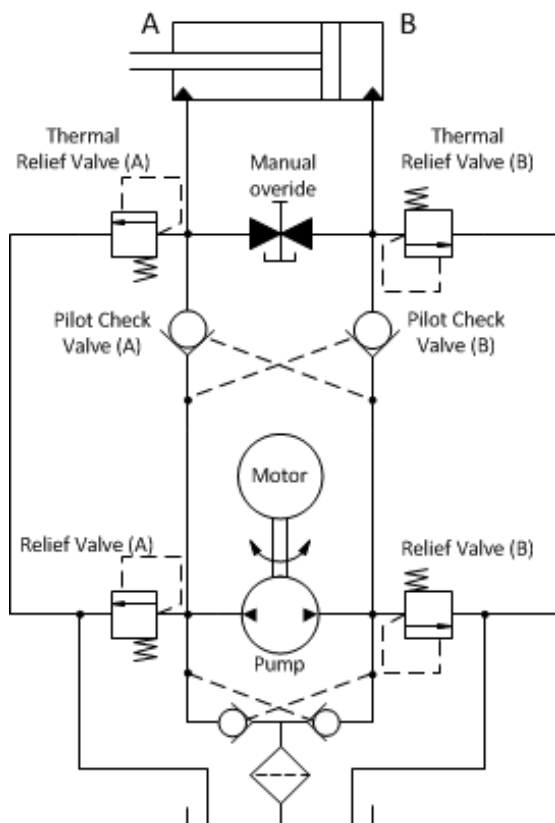
11

04H

PRNT

S01

G1



Specifications

Pump

Type	Reversible Gears
Size	0,26 to 1.5 cc/rev

Motors

12 & 24VDC	150, 250, 500 and 800 Watt
240VAC	140 and 150 Watt
415VAC	140 Watt

Hydraulic circuit

Reversible circuits for double acting actuators.

Reservoirs

Plastic	0.5 and 1.5 Litre
Aluminium	0.1 to 1 Litre

Performance

Pressure	to 200bar
Flow	to 5lpm

Hydraulic oil

Recommended—Mineral Oil HLP HV 6743/4 DIN 51519
Viscosity ISO3448/VG32 (20-100 permissible)

ERA Electro-Hydraulic Reversible Power pack kits

ERA

DC Motor Range
AC Motor

11

Gear Pumps

04H

Hydraulic circuits

PRNT

Filler Position
Tank

S01

Mounting plate kits

G1

ERA 1 1 04H P R N T S 01 G1

MOTORS		
1	1	150Watt 12 VDC
1	2	250Watt 12 VDC
1	5	500Watt 12 VDC
1	8	800 Watt 12 VDC
2	1	150Watt 24 VDC
2	2	250Watt 24 VDC
2	5	500Watt 24 VDC
2	8	800Watt 24 VDC
M	1	150Watt 240VAC
S	1	140Watt 240VAC
T	1	140Watt 415VAC

PUMP	
02H	0.26cc/rev
04H	0.4
08H	0.8
10H	1.0
12H	1.2
15H	1.5

CIRCUIT			
P			Pilot Check Valves
	R		Pressure Relief Valve s
		M	Manual Release
		T	Thermal Relief Valves

TANK	
B	Body Filler
E	End Filler
N	No Filler
S	Side Filler
01	0.1 Litre Alloy
02	0.2 Litre Alloy
05	0.5 Litre Alloy
10	1.0 Litre Alloy
05P	0.5 Litre Plastic

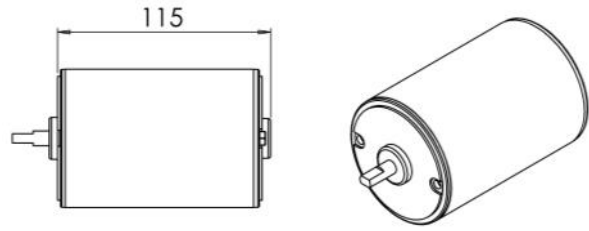
MOUNTING PLATE KIT	
W1	10mm feed Pipe holes for welding
G1	1/4" BSP cylinder ports
E4	40mm bore cylinder end plug
E5	50mm bore cylinder end plug
E6	63mm bore cylinder end plug

* - N if not required

MOTORS

DC Motors— 150W and 250W IP44

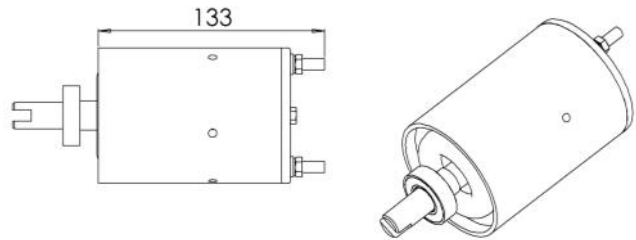
HP4129 12V 150W	11
HP4028 12V 250W	12
HP4135 24V 150W	21
HP029 24V 250W	22



for performance data see page 7

DC Motors— 500W and 800W IP55 (when fitted)

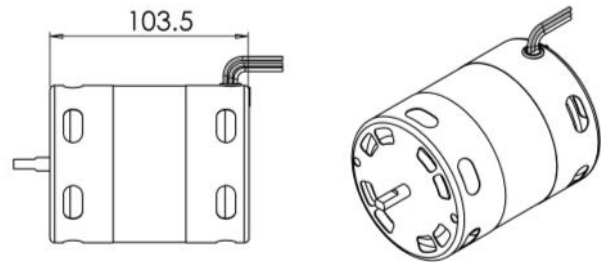
HP4143 12V 500W	15
HP4145 12V 800W	18
HP4144 24V 500W	25
HP4146 24V 800W	28



for performance data see page 8

AC Motor - 150Watt 240V 50Hz S2 duty IP20

150Watt FHP Motor	M1
-------------------	----



for performance data see page 9

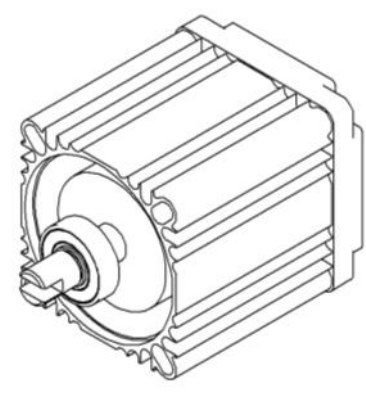
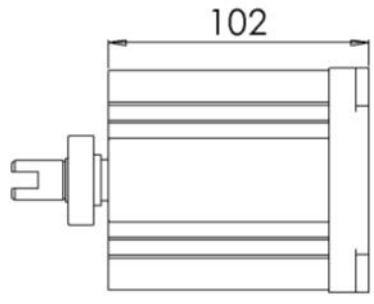
ERA
11
04H
PRNT
S01
G1

ERA

AC Motors - 1 phase and 3 phase 50Hz B34 IEC IP65 S2 duty

0.15kW 2pole 1phase 220V 50Hz	TC2
0.15kW 2pole 3phase 380/415V 50Hz	TD2

11



04H

PRNT

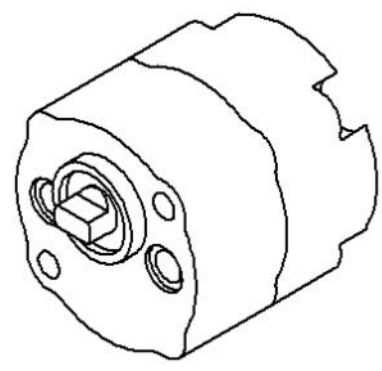
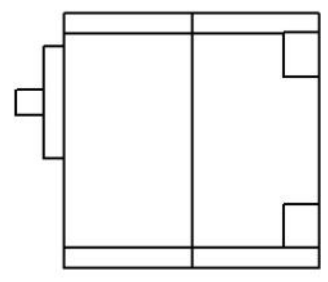
S01

HYDRAULIC PUMPS

Gear Pump group 0

Size cm ³ /rev	Pmax	Code
0.26	220	02H
0.4	220	04H
0.8	220	08H
1.0	220	10H
1.2	200	12H
1.5	180	15H

G1



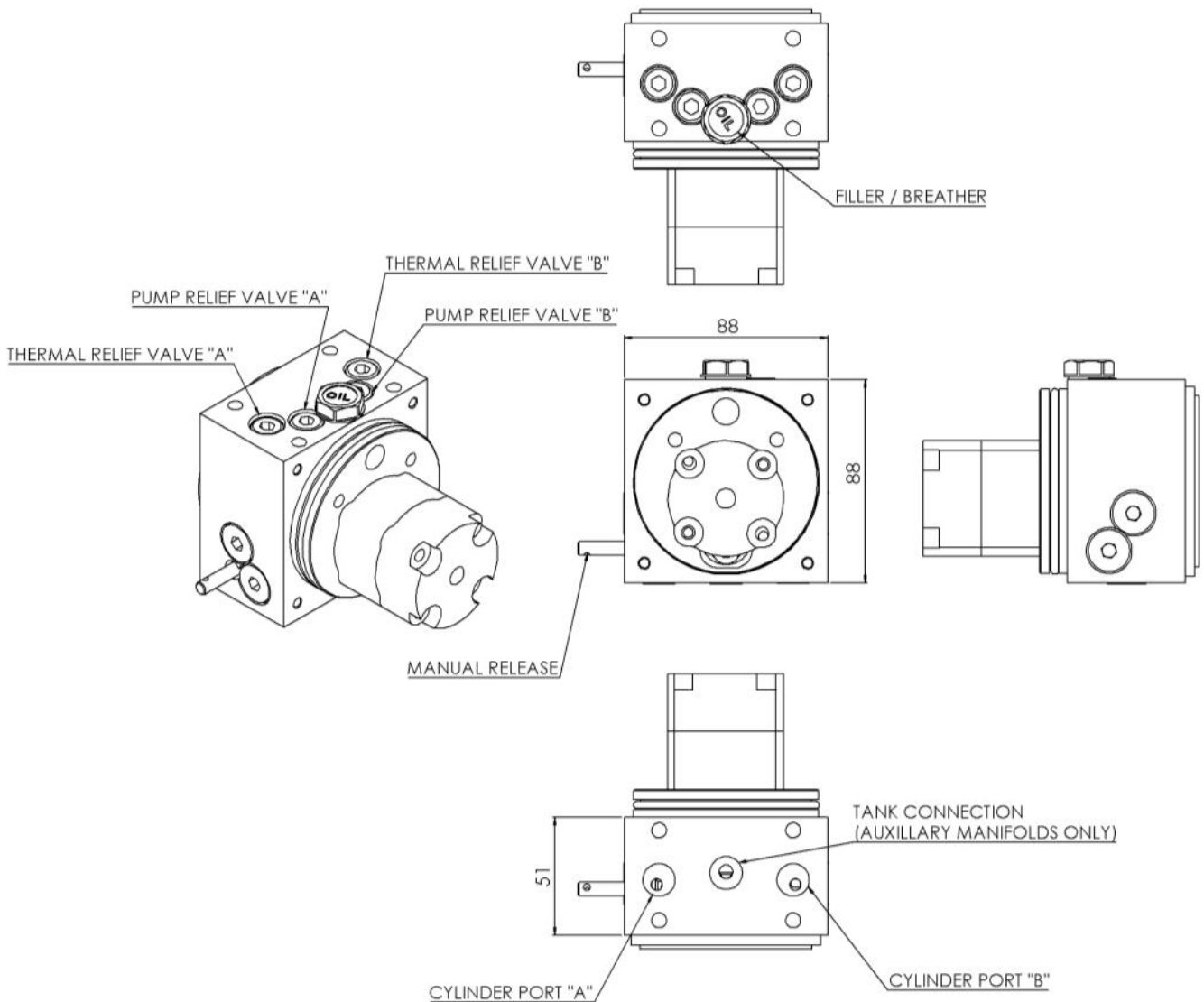
CENTRAL MANIFOLD

Hydraulic circuit

Manifold

Pilot Check Valve	P			
Pressure Relief Valve		R		
Manual Release			M	
Thermal Relief Valves				T

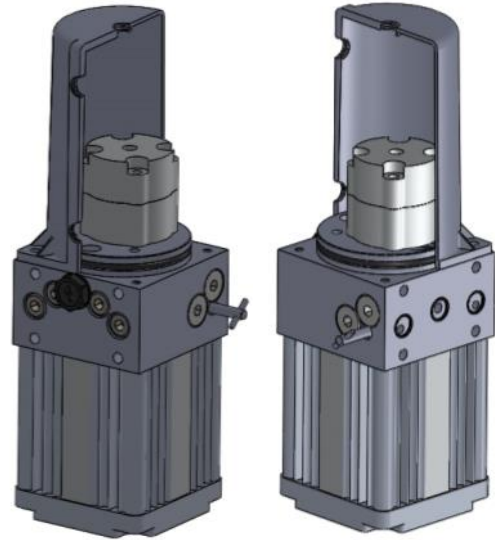
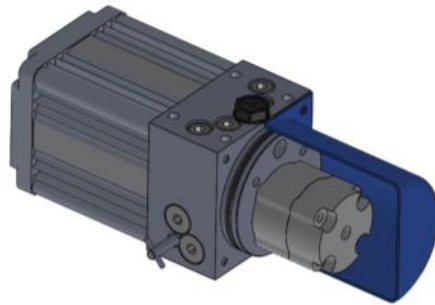
PRMT Circuit—Standard



ERA
11
O4H
PRNT
S01
G1

Filler/Breather Positions

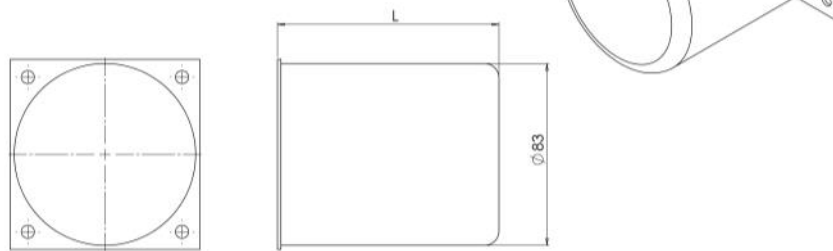
Description	Type
Body Filler - in manifold, horizontal only	B
Side Filler - in tank, horizontal only	S
End Filler - in tank end, vertical only	E
No Filler - consult technical sales for this option	N



Aluminium Oil Tank

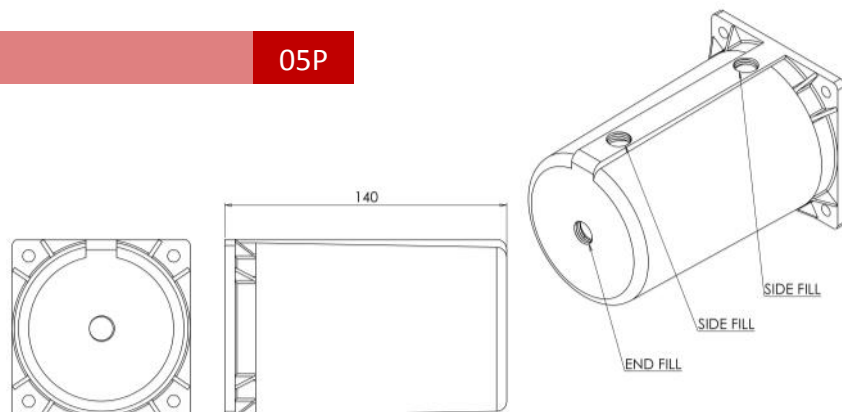
Cylindrical

Description	L=Length	Type
0.1 Litre	80	01
0.2 Litre	100	02
0.5 Litre	140	05
1 Litre	240	10



Plastic Oil Tank

0.5 Litre Plastic	05P
-------------------	-----



ERA

11

04H

PRNT

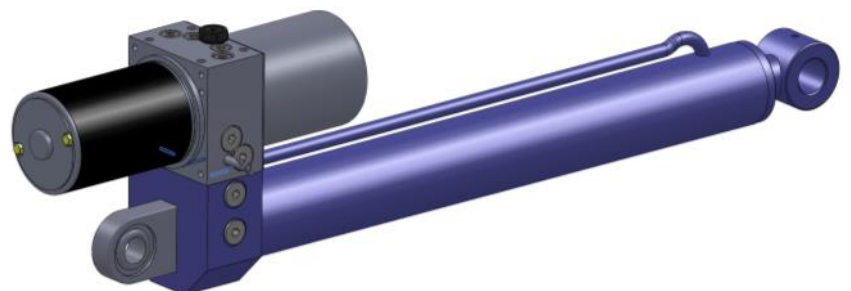
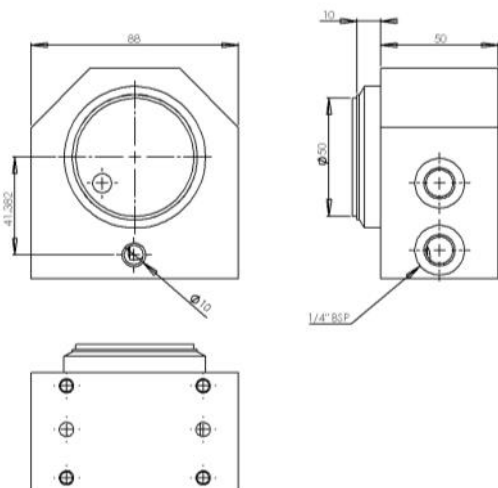
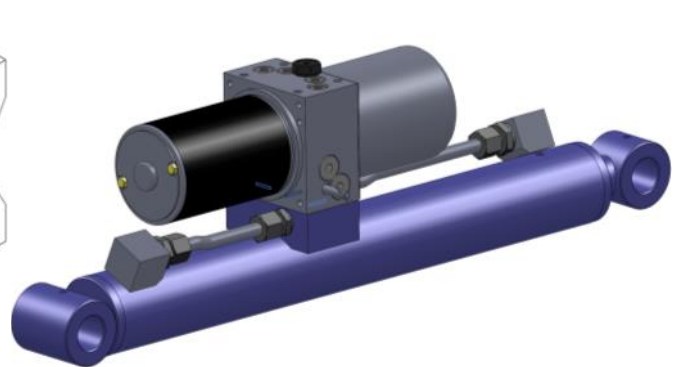
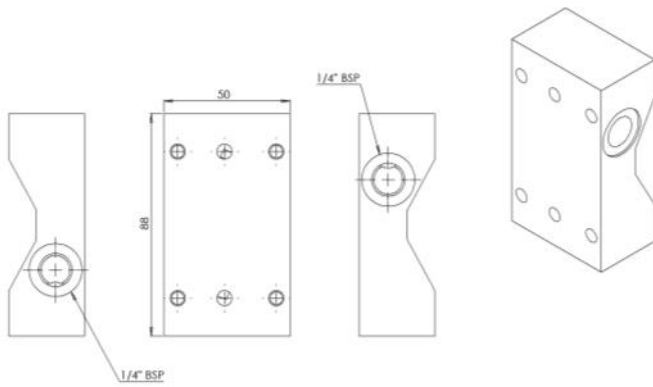
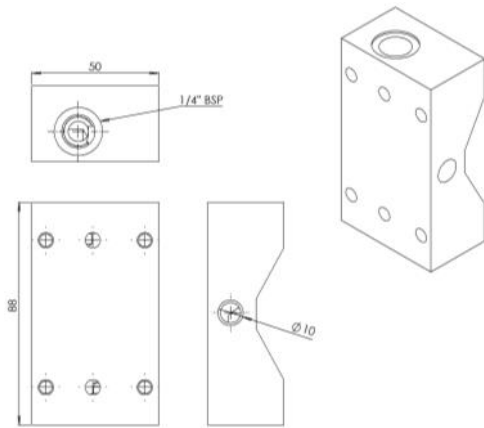
S01

G1

Mounting Plate Kit

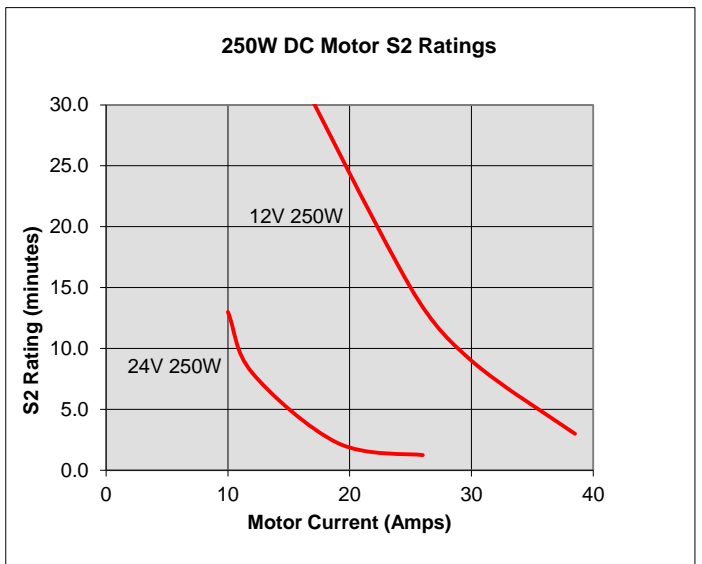
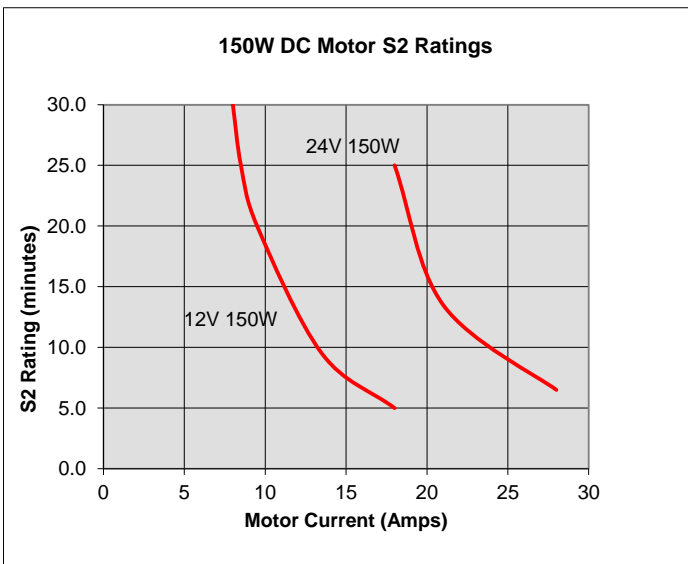
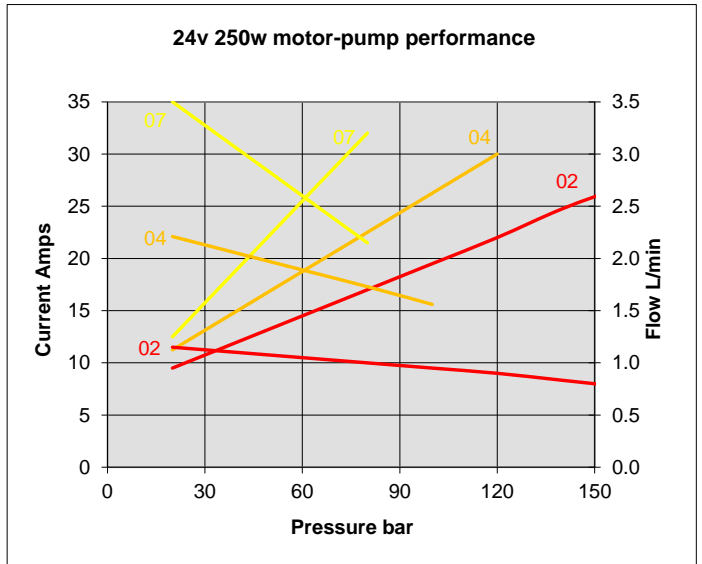
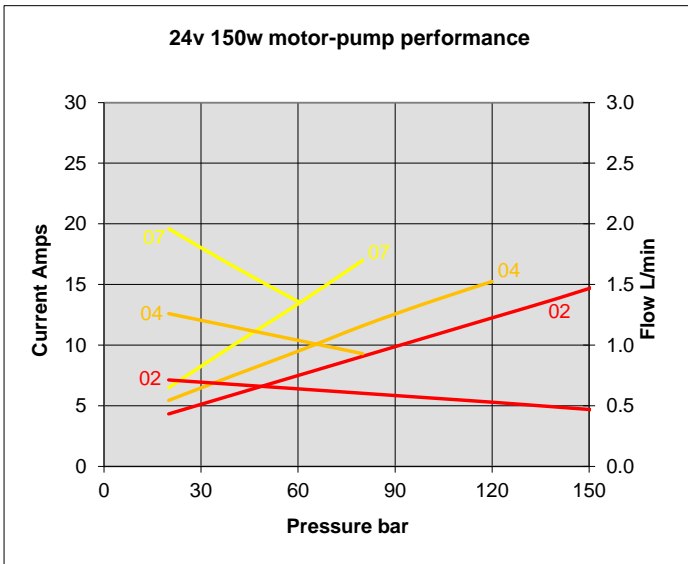
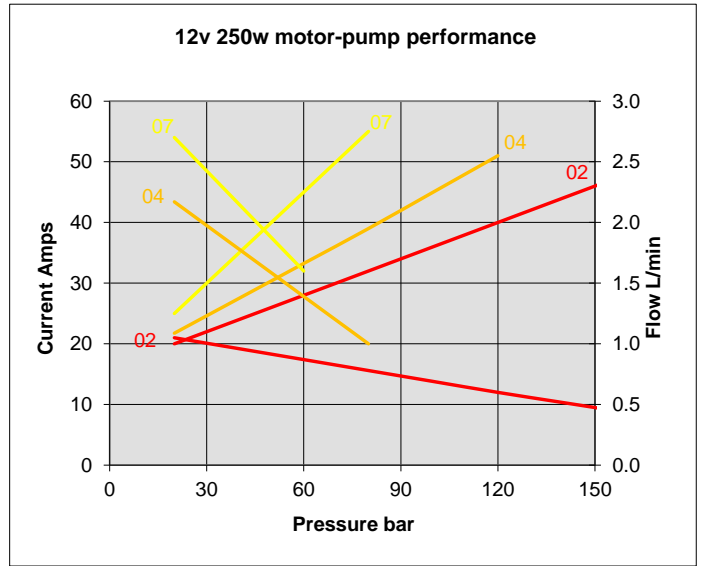
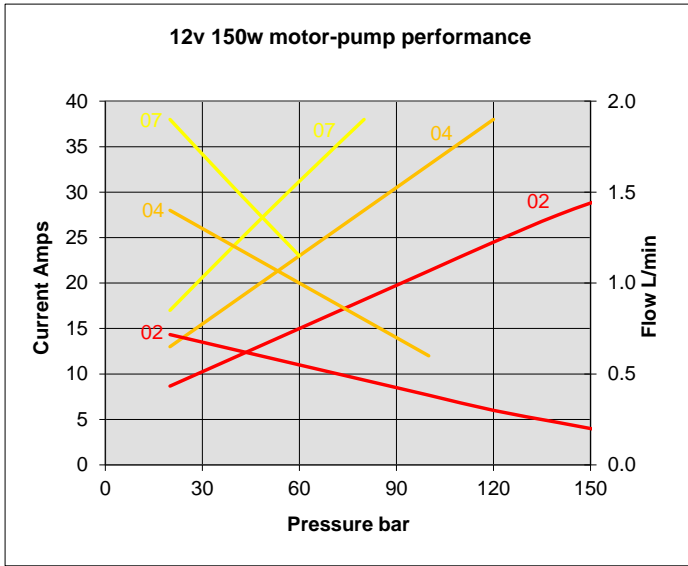
Description

10mm feed Pipe holes for welding	W1
1/4" BSP cylinder ports	G1
40mm bore cylinder end plug	E4
50mm bore cylinder end plug	E5
60mm bore cylinder end plug	E6



- ERA
- 11
- 04H
- PRNT
- S01
- G1

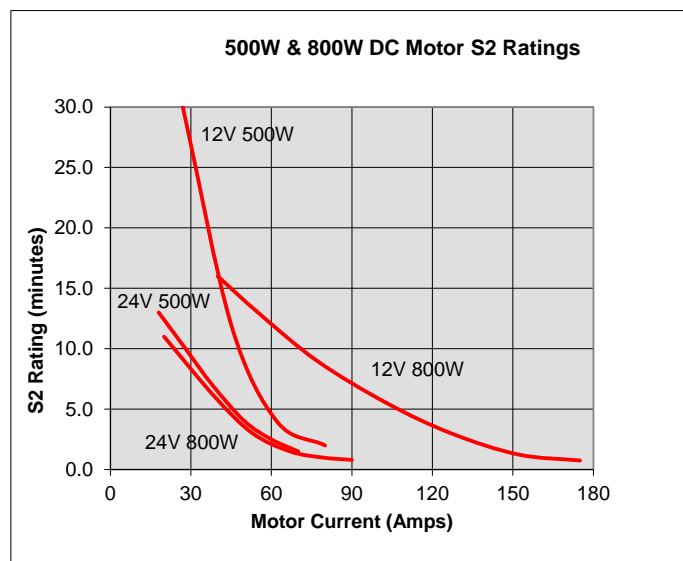
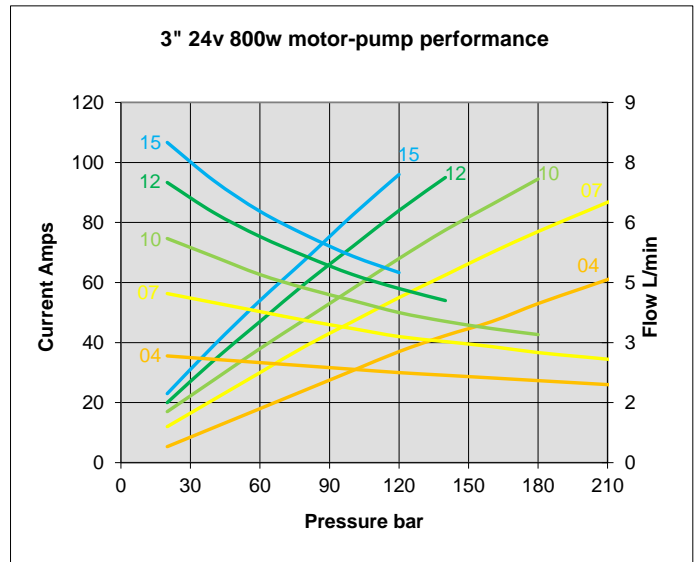
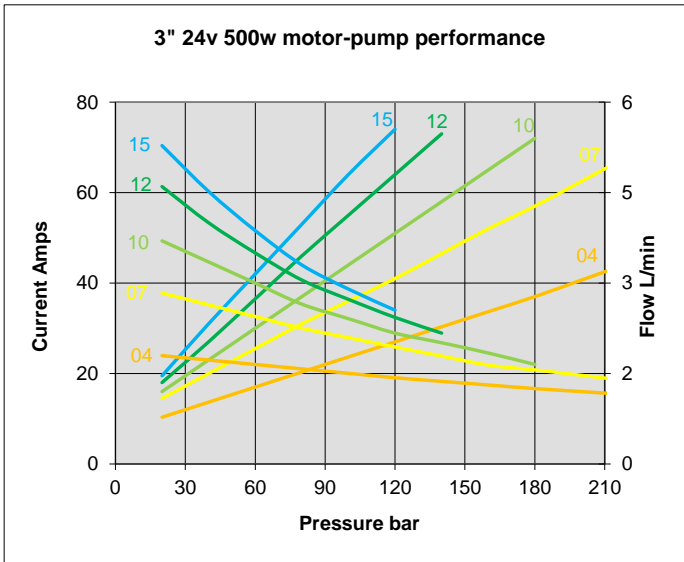
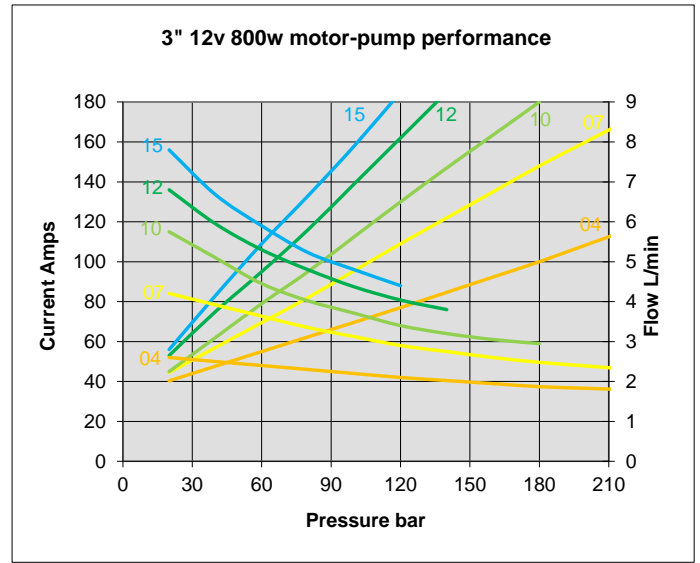
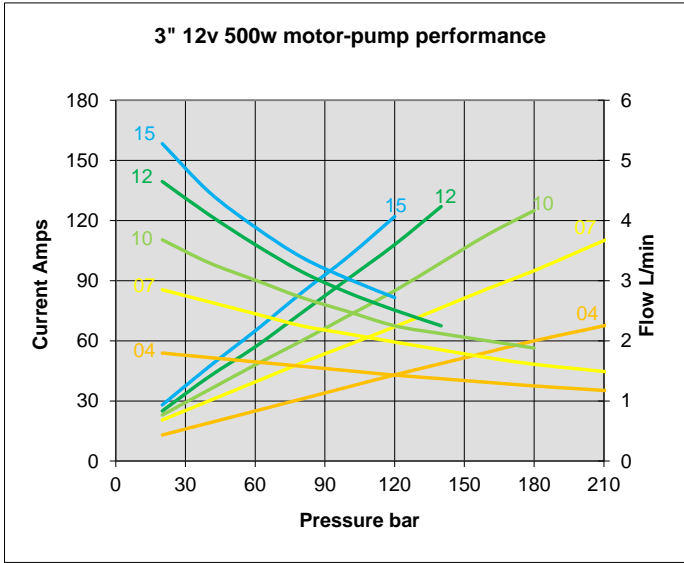
Nominal motor-pump performance at constant voltage and at nominal 20-25° C with ISO 3448/VG22



ERA
11
04H
PRNT
S01
G1

S2—Short time Duty— Maximum run time at load, followed by a time of rest to re-establish ambient temperature.

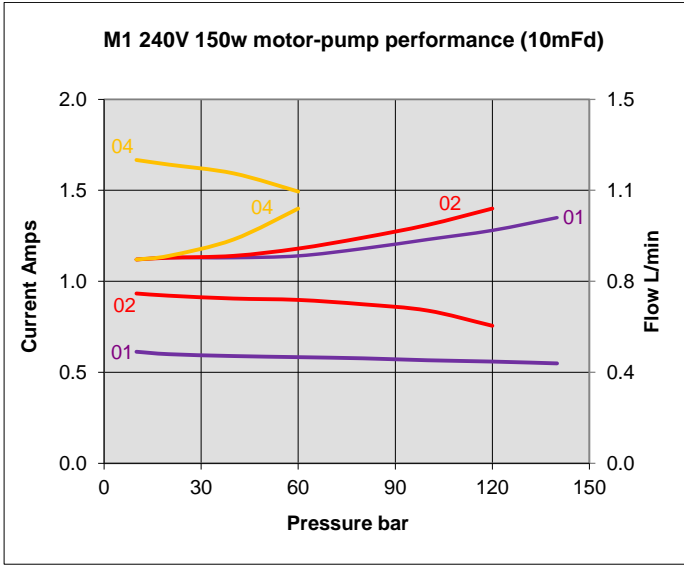
Nominal motor-pump performance at constant voltage and at nominal 20-25° C with ISO 3448/VG22



ERA
11
04H
PRNT
S01
G1

S2—Short time Duty— Maximum run time at load, followed by a time of rest to re-establish ambient temperature.

Nominal motor-pump performance at constant voltage and at nominal 20-25° C with ISO 3448/VG22



- ERA
- 11
- 04H
- PRNT
- S01
- G1